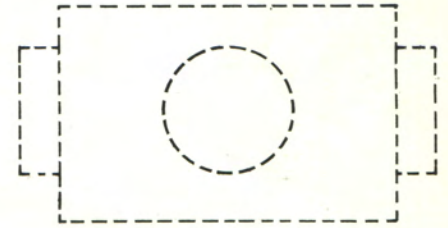
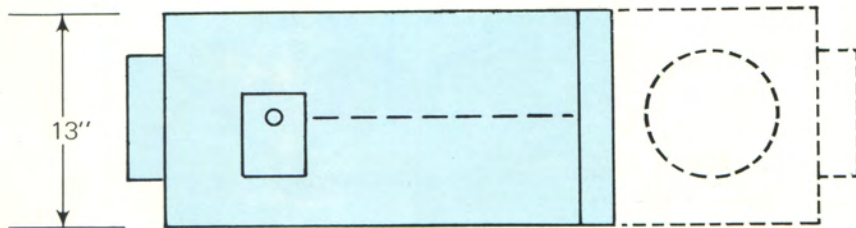
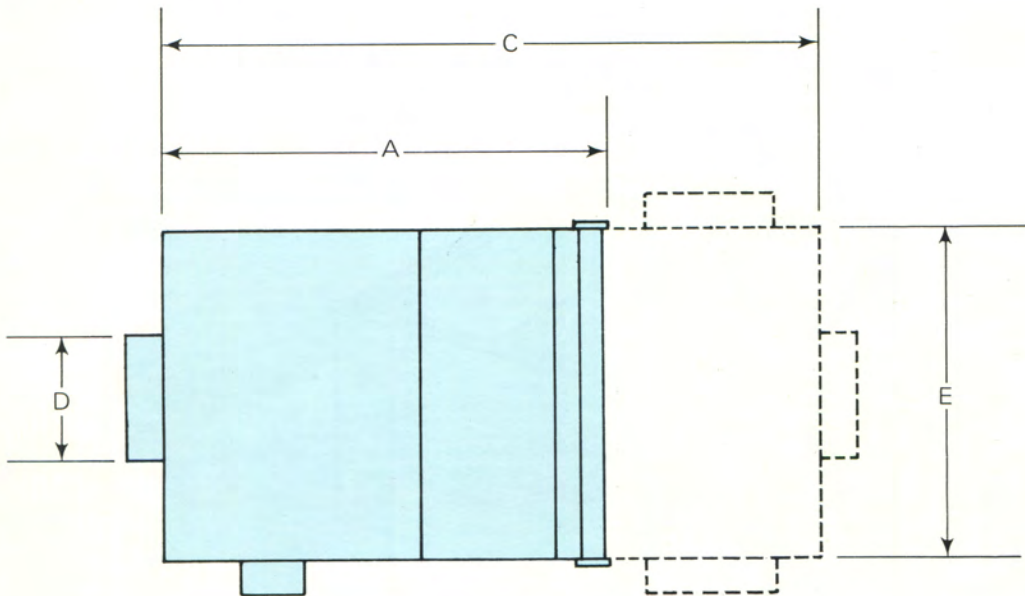


Model Number

V	BP	0750	E
Varex	By-Pass	Nominal Capacity in CFM 0250 0500 0750 1000 1500 2000	Control System P = 18 PSI Pneumatic by Carnes E = 24 Volt Electric by Carnes N = Other (Specify)

Dimensions



	Unit Size					
	250	500	750	1000	1500	2000
A	13	13	17	22	32	42
C	40	40	42	42	44	44
D Inlet	6	8	10	10x12	10x15	10x20
E	30	30	30	30	30	30

CONTROL ACTION

Upon a drop in room temperature, thermostat activates the electric motor in the rotation shown, opening the by-pass section and simultaneously closing the primary section. Response time for full valve action is approximately 15 minutes.

NOTE: Thermostat has been modified by the factory to by pass the anticipator circuit.

Control Schematic
Varex Bypass Model VBP 1000 E

