

Carnes fan induction unit allows the use of recirculated air when true VAV cannot fulfill heating requirements.

The fan induction unit operates in the same manner as the throttling control unit when cooling loads are present. Thus offering a wide range of minimum and maximum air flow settings.

As cooling loads diminish an integral blower supplies recirculated air to the zone. Available with hot water reheat coils, fan induction can be used to provide heat to perimeter zones with the central station fans turned off.

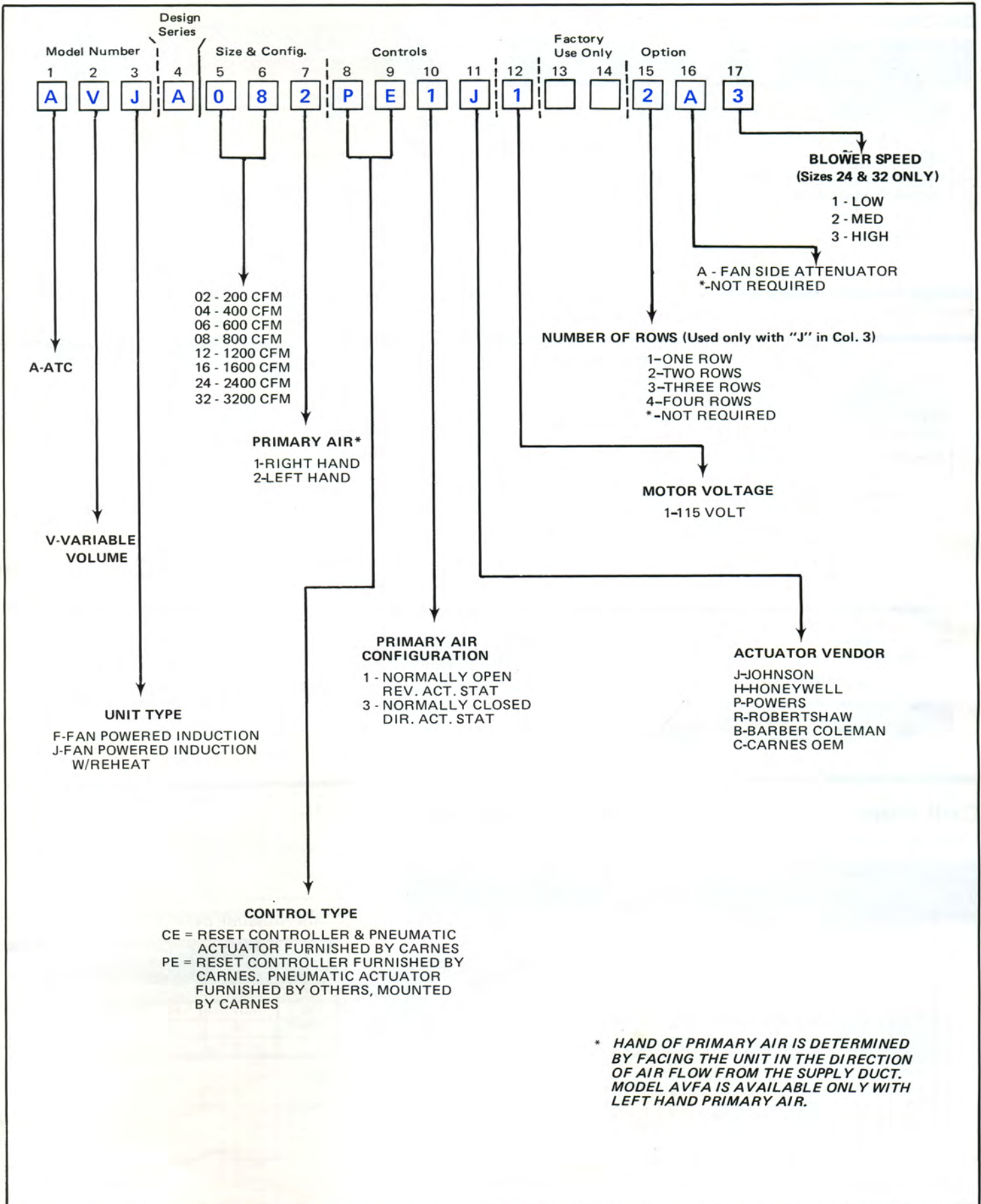
A wide variety of control sequences makes the fan induction unit compatible with the most energy efficient system design.

Fan Induction Features:

- Air flow capacities to 3,200 CFM.
- Integral blowers are sized to deliver 72% to 97% of nominal CFM with 0.20 inches external static pressure. Percentage nominal CFM varies with unit size. Blower operation is intermittent for energy savings.
- Blower motors are mounted externally to provide easy access for routine maintenance.
- Insulation guard protects discharge insulation from erosion.
- Fan induced recirculated air is filtered through a permanent filter.
- Access panels for the air filter, heating coil, and blower cuts maintenance and cleaning costs.
- Duct connection costs are minimized with standard round inlets and "S" and drive discharge connections.
- A back draft damper keeps conditioned air from short circuiting through the induction section.
- Field adjustment of recirculated air flow. Balancing damper on unit sizes 02-16. Choice of three speeds on unit sizes 24-32.

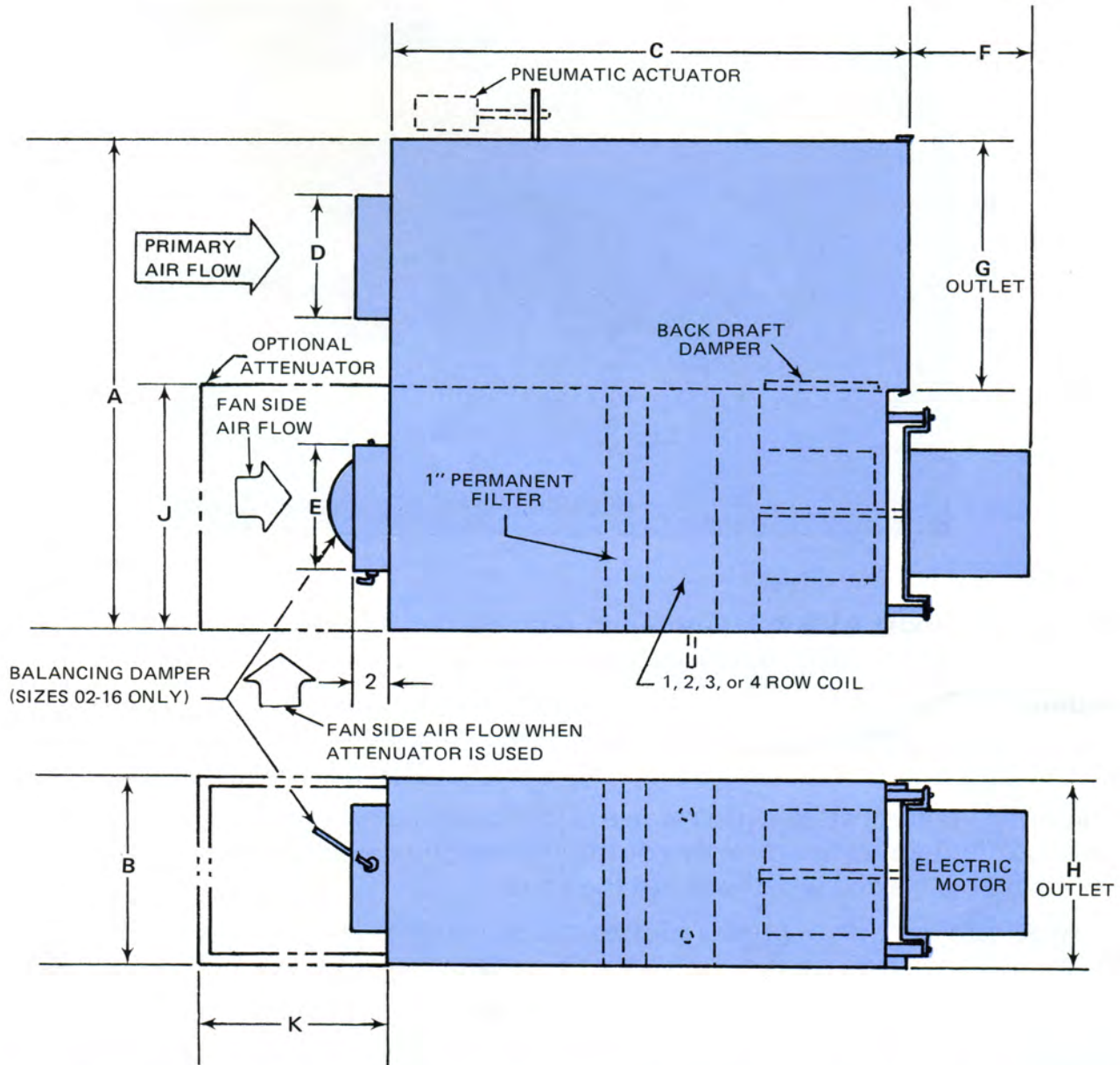
Model Numbering System—AVFA/AVJA - Fan Induction

5



Dimensional Data—Models AVFA/AVJA

5



SIZE	Nominal CFM	Unit Fan Nominal CFM	UNIT FAN MOTOR			A	B	C	D	E	F	S&DRIVE OUTLET		J	K	WEIGHT (LBS) (Less Coil & Attenuator)
			HP	Fan RPM	TYPE							G	H			
02	200	200	1/20	1550	SP	22-3/4	12	24-3/4	5	6	6	11	12	N.A.	N.A.	60
04	400	340	1/20	1550	SP	24-3/4	13	24-3/4	6	7	6	11	13	N.A.	N.A.	80
06	600	455	1/12	1550	SP	27-1/4	14	24-3/4	7	10	8	11	14	N.A.	N.A.	110
08	800	810	1/3	1625	PSC	30-1/4	16	30	8	12	10	12	16	18	18	150
12	1200	1240	3/4	1075	PSC	40-3/4	18	30	10	14	14	18	18	22	18	180
16	1600	1375	3/4	1075	PSC	48-1/4	18	30	12	16	14	20	18	26	18	200
24	2400	1490	3/4	545	PSC	55-1/2	20	47-3/4	14	16	14	26	18	28	18	250
		1950		715												
		2230		805												
32	3200	2230	1-1/2	805	PSC	61-1/2	20	47-3/4	16	16	14	32	18	28	18	285
		2450		900												
		2920		1070												

*Unit Fan Nominal CFM is For Clean Filter, No Coil and O.O External Static Pressure

COIL CONNECTIONS

1 ROW .500" O.D.
2 ROW .500" O.D.
3 ROW .625" O.D.
4 ROW .875" O.D.

MAXIMUM CLEARANCES REQUIRED

6" ACTUATOR SIDE
30" FILTER SIDE
20" MOTOR END