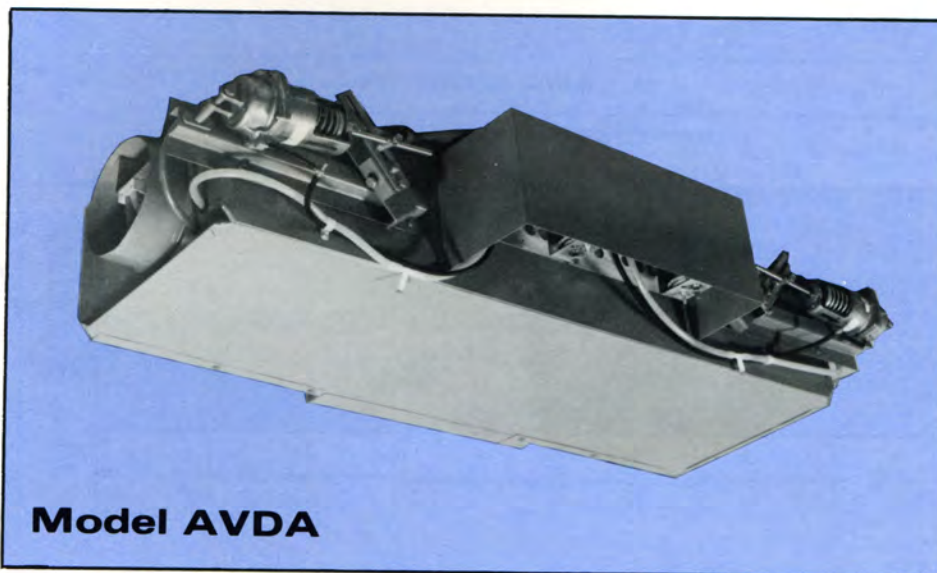


## Dual Inlet Throttling Control Unit



**The Carnes Model AVDA**, dual inlet VAV unit, contains two low pressure drop, high velocity throttling valves. Hot and cold duct valves are independently controlled. Pressure independent reset constant volume controllers accurately control the hot and cold duct air flows.

A common thermostat controls the individual reset constant volume controllers. Selection of proper controller spring ranges and pneumatic devices allows sequences of operation from constant discharge volume to no mixing.

Hot and cold throttling valves can be factory set for normally open or normally closed configurations, compatible with direct or reverse acting thermostats.

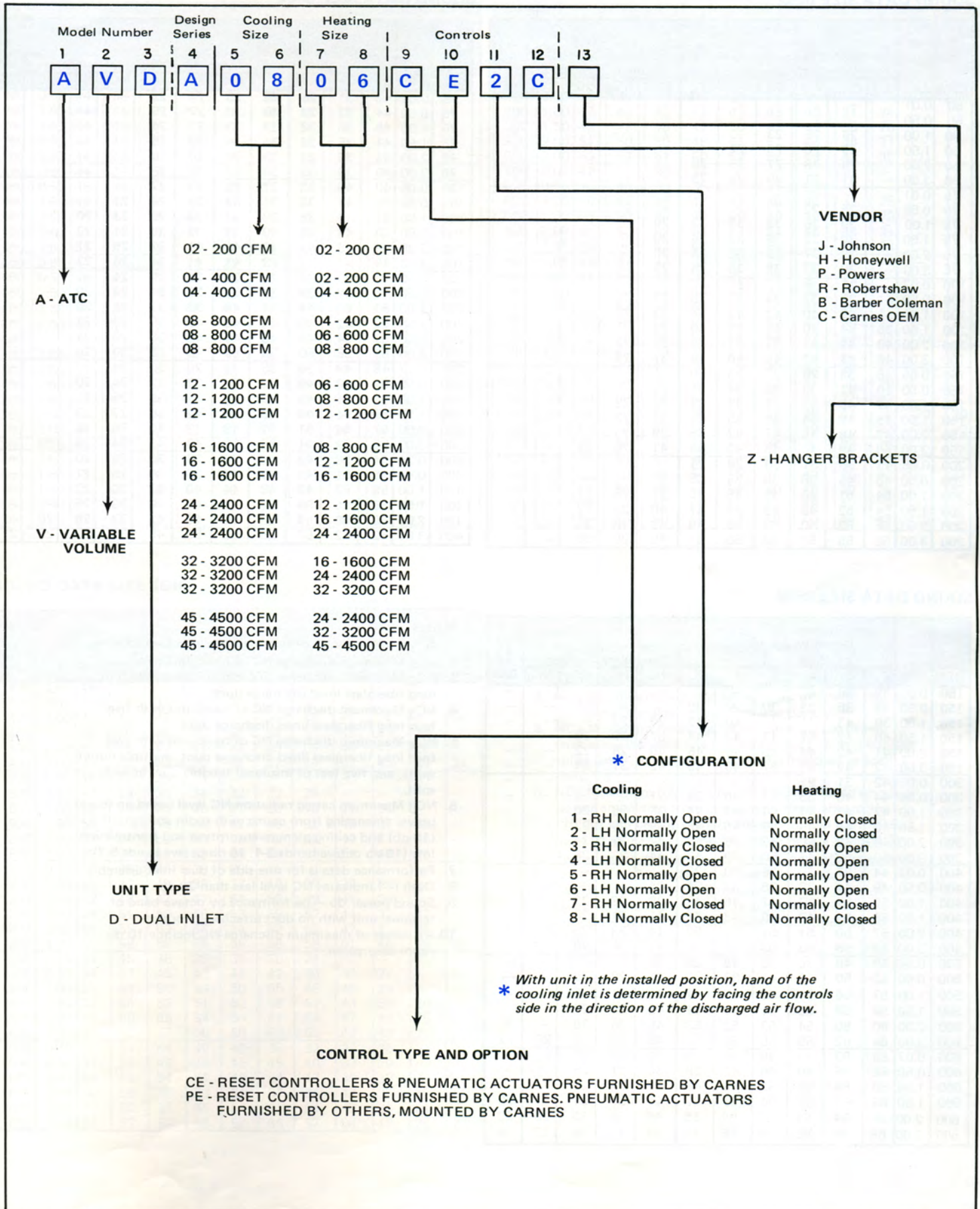
A wide variety of available control sequences makes the Carnes dual inlet VAV unit adaptable to the most energy saving system design.

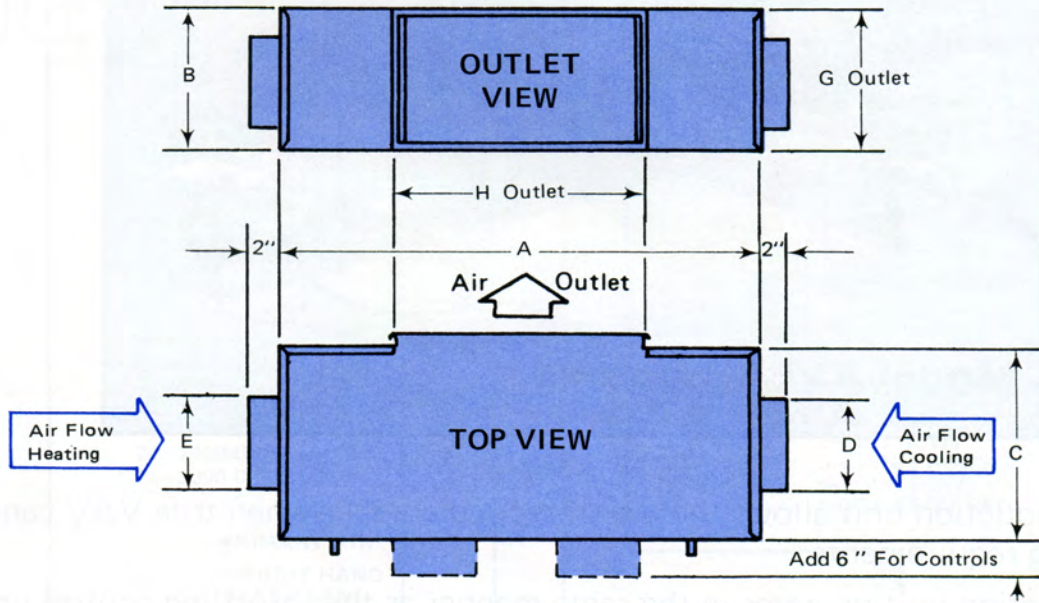
### Other Features Include:

- Air flow capacities to 4,500 CFM.
- Low sound levels.
- Linear valve characteristics assure stable control conditions.
- Thermally and acoustically insulated casing.
- Hot and cold throttling valves are independently controlled.
- Excellent hot and cold airstream mixing effectiveness assures constant temperature at unit discharge when air mixing is required.
- Pressure independent reset constant volume controllers accurately control hot and cold air flows.
- Open-end discharge provided with S and drive connection for easy installation.

# Model Numbering System—AVDA Externally Powered

4





RIGHT HAND COOLING SIDE CONFIGURATION SHOWN

Unit Size	MAX. CFM		A (inches)	B (inches)	C (inches)	D (inches)	E (inches)	S & Drive Outlet	
	Clg.	Htg.						G	H
02 02	200	200	41	8	13	5	5	8	13
04 02 04 04	400 400	200 400	41	8	13	6	5 6	8	13
06 02 06 04 06 06	600	200 400 600	47	10	14	7	5 6 7	10	14
08 04 08 06 08 08	800	400 600 800	47	10	17	8	6 7 8	10	17
12 06 12 08 12 12	1200	600 800 1200	47	12	20	10	7 8 10	12	20
16 08 16 12 16 16	1600	800 1200 1600	54	14	22	12	8 10 12	14	22
24 12 24 16 24 24	2400	1200 1600 2400	60	16	26	14	10 12 14	16	26
32 16 32 24 32 32	3200	1600 2400 3200	66	18	32	16	12 14 16	18	32
45 24 45 32 45 45	4500	2400 3200 4500	66	18	32	18 x 16	14 16 18 x 16	18	32