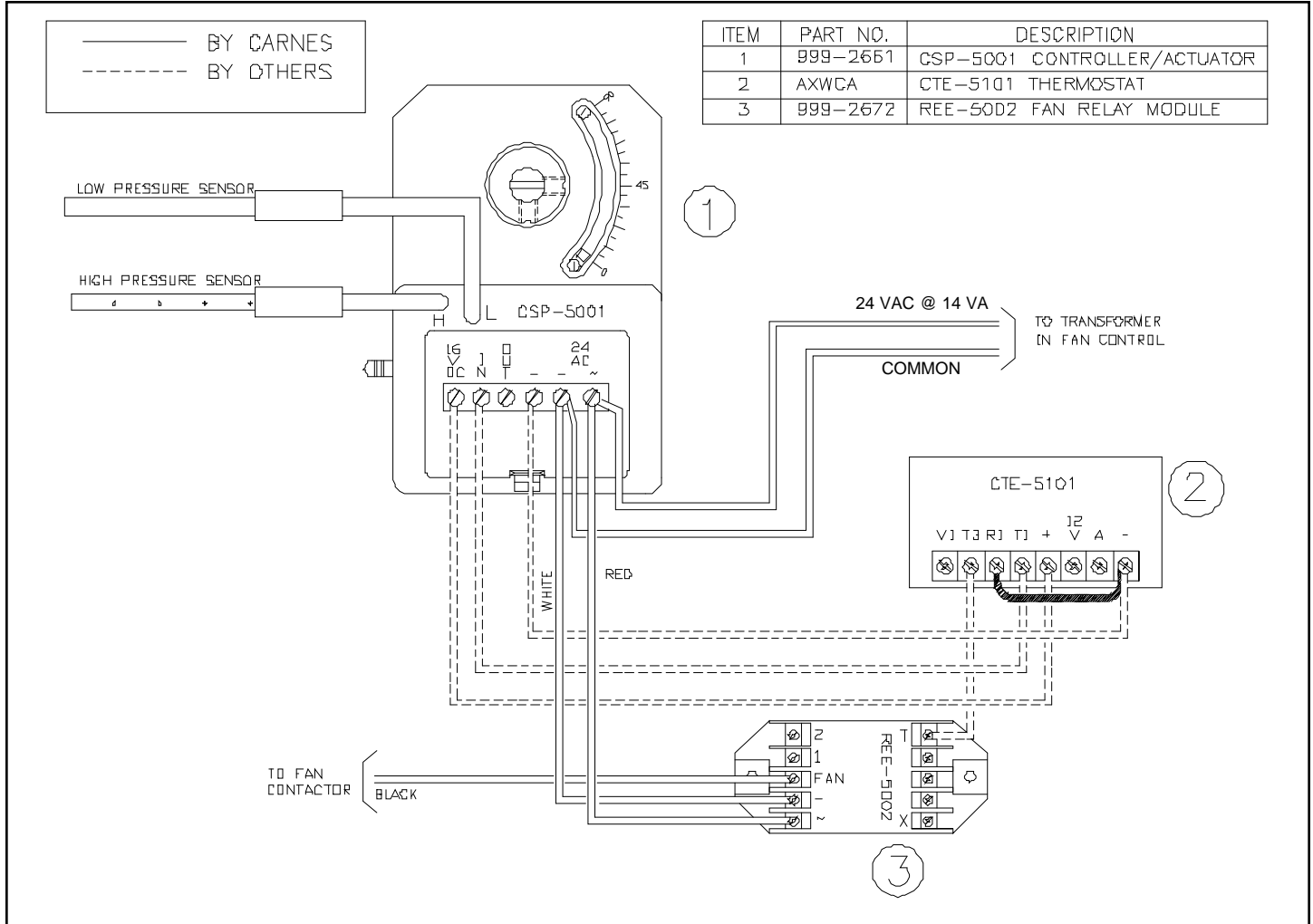


SPECIFICATION SHEET INTERMITTENT FAN POWERED AIR TERMINAL ANALOG ELECTRONIC CONTROLS ET - CONTROL OPTION

CARNES COMPANY 448 S. Main St., P. O. Box 930040, Verona, WI 53593-0040 Phone: (608)845-6411 Fax: (608)845-6504 www.carnes.com



SEQUENCE OF OPERATION

ON A CALL FOR COOLING, AIRFLOW WILL INCREASE AS THE DAMPER OPENS TOWARDS THE MAXIMUM CFM SETTING TO SATISFY ROOM SET-POINT.

ON A CALL FOR HEATING, AIRFLOW WILL DECREASE AS THE DAMPER CLOSES TOWARDS THE MINIMUM CFM SETTING TO SATISFY ROOM SET-POINT.

WITH A FURTHER CALL FOR HEAT, DAMPER WILL REMAIN AT MINIMUM CFM AND FAN WILL BE ENERGIZED TO INDUCE WARM PLENUM AIR THROUGH THE UNIT.

AS ROOM TEMPERATURE INCREASES THE FAN IS SEQUENCED OFF AND THE PRIMARY AIR INCREASES TO SATISFY ROOM SET-POINT

CONTROL DIAGRAM

