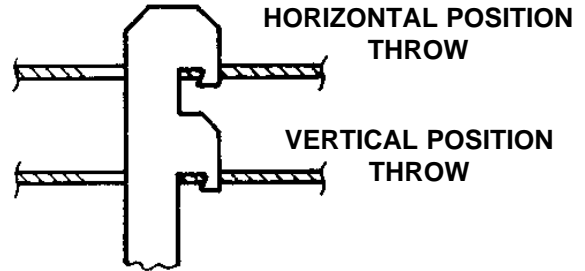
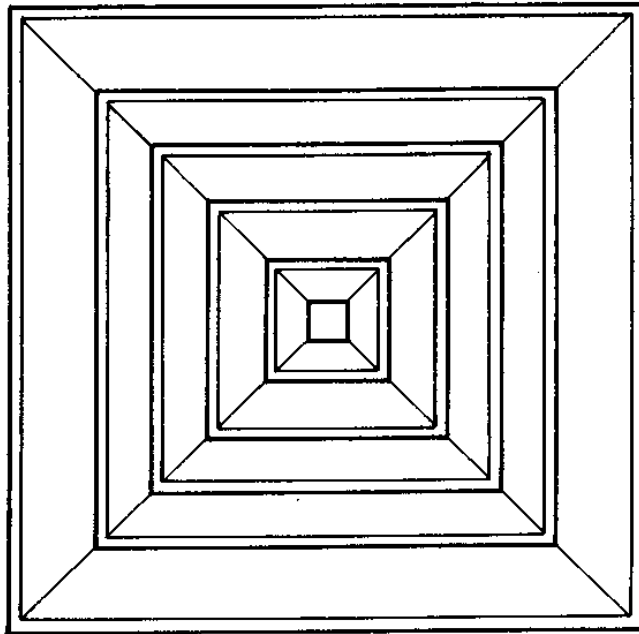


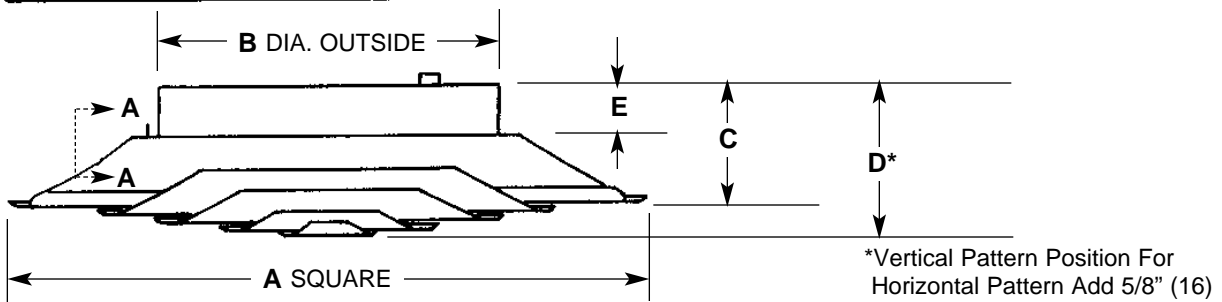
Imperial [IP] Dimensions
Metric (SI) in Parentheses

CARNES COMPANY 448 S. Main St., P. O. Box 930040, Verona, WI 53593-0040 Phone: (608)845-6411 Fax: (608)845-6504 www.carnes.com



VIEW A - A
ADJUSTMENT DETAIL

MINIMUM CEILING SQUARE
OPENING IS "A" MINUS 1-1/4" (32)



DIMENSIONS LISTED IN INCHES (Millimeters)

| Model No. | Nominal Duct Size [Dia.] | Surface Mount | | | | | No. of Cones |
|-----------|--------------------------|---------------|--------------|---------------|--------------|------------|--------------|
| | | A | B | C | D | E | |
| SJEA 1205 | 5 (127) | 12-1/2 (318) | 4-7/8 (124) | 3-1/8 (92) | 3-1/4 (95) | 1-1/4 (32) | 3 |
| SJEA 1206 | 6 (152) | 12-1/2 (318) | 5-7/8 (149) | 3-1/8 (92) | 3-1/4 (95) | 1-1/4 (32) | 3 |
| SJEA 1207 | 7 (178) | 12-1/2 (318) | 6-7/8 (175) | 3-1/8 (92) | 3-1/4 (95) | 1-1/4 (32) | 3 |
| SJEA 1806 | 6 (152) | 18-1/2 (469) | 5-7/8 (149) | 3-15/16 (113) | 4-7/16 (125) | 1-1/4 (32) | 4 |
| SJEA 1807 | 7 (178) | 18-1/2 (469) | 6-7/8 (175) | 3-15/16 (113) | 4-7/16 (125) | 1-1/4 (32) | 4 |
| SJEA 1808 | 8 (203) | 18-1/2 (469) | 7-7/8 (200) | 3-15/16 (113) | 4-7/16 (125) | 1-1/4 (32) | 4 |
| SJEA 1810 | 10 (254) | 18-1/2 (469) | 9-7/8 (251) | 3-15/16 (113) | 4-7/16 (125) | 1-1/4 (32) | 4 |
| SJEA 1812 | 12 (305) | 18-1/2 (469) | 11-7/8 (302) | 3-15/16 (113) | 4-7/16 (125) | 1-1/4 (32) | 4 |

Each unit has a removable center cone for access to the damper control rod.
 Each unit inner assembly is easily removable for mounting to the duct work.
 Standard finish is #11 white electrocoat enamel.