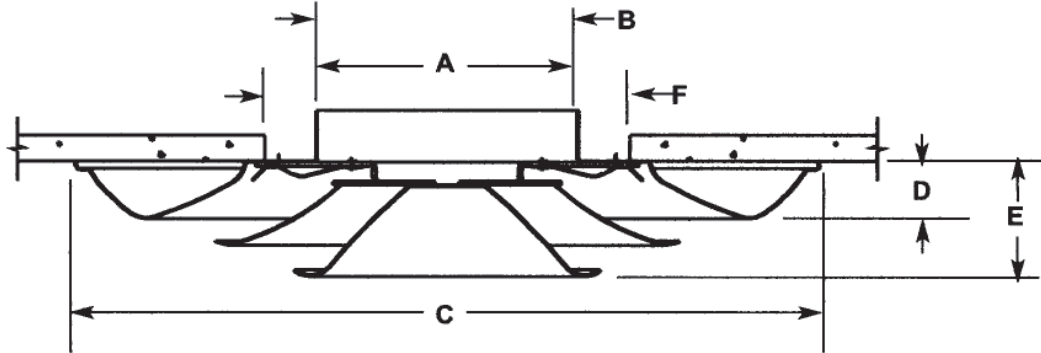


Imperial [IP] Dimensions
Metric (SI) in Parentheses

CARNES COMPANY 448 S. Main St., P. O. Box 930040, Verona, WI 53593-0040 Phone: (608)845-6411 Fax: (608)845-6504 www.carnes.com

SIZES
4 - 18



Dim. Description	4	5	6	8	10	12	14	16	18
A Neck Inside Diameter	4-1/16	5-1/16	6-1/16	8-1/16	10-1/16	12-1/16	14-1/16	16-1/16	18-1/16
	(103)	(129)	(154)	(205)	(256)	(306)	(357)	(408)	(459)
B Neck Outside Diameter	4-1/8	5-1/8	6-1/8	8-1/8	10-1/8	12-1/8	14-1/8	16-1/8	18-1/8
	(105)	(130)	(156)	(206)	(257)	(308)	(359)	(410)	(460)
C Frame Outside Diameter	14-1/2	14-1/2	14-1/2	17-9/16	19-13/16	22-1/16	24-1/16	28-13/16	32-1/16
	(368)	(368)	(368)	(446)	(503)	(506)	(611)	(732)	(814)
D Form Projection	1-3/16	1-3/16	1-3/16	1-3/8	1-3/8	1-3/8	1-1/2	2-1/8	2-1/8
	(30)	(30)	(30)	(35)	(35)	(35)	(38)	(54)	(54)
E Overall Projection	1-15/16	1-15/16	1-15/16	2-3/8	1-7/8	2-15/16	2-15/16	2-3/4	3-1/8
	(49)	(49)	(49)	(60)	(48)	(59)	(59)	(70)	(79)
F Rec. Ceiling Opening	7-1/4	7-1/4	7-1/4	9-1/4	11-1/4	13-1/4	15-1/4	17-1/4	19-1/4
	(184)	(184)	(184)	(235)	(286)	(337)	(387)	(438)	(489)
G Collar Height	3/4	1-3/8	1	1	1	1	1	1	1
	(19)	(35)	(25)	(25)	(25)	(25)	(25)	(25)	(25)

Notes:

1. Aluminum construction.
2. Standard finish is electrocoat acrylic baked enamel. Other finishes are available on request.
3. Standard color is #11 Bright White. Other colors are available on request.
4. Neck is oversized to fit over standard duct.