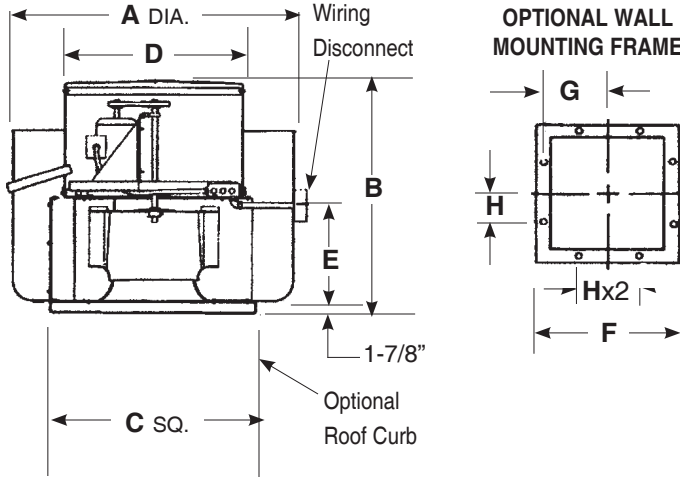


Imperial [IP] Dimensions  
Metric (SI) in Parentheses

CARNES COMPANY 448 S. Main St., P. O. Box 930040, Verona, WI 53593-0040 Phone: (608)845-6411 Fax: (608)845-6504 www.carnes.com

### MODEL VRBK



### STANDARD FEATURES

- U. L. 762 Label for restaurant exhaust.
- Disconnect switch is NEMA 3R raintight external wiring connection.
- Insulation is provided in the ventilated motor compartment with the motor out of the airstream.
- VRBK 06-24 can be wall mounted.
- Adjustable motor sheave factory preset to requested RPM.
- Dual drive belts on 5 HP and up.
- Spun and shaped aluminum housing, mill finish standard.
- Integral drain opening.
- Integral motor overload protection on all std. single phase motors.
- Non-overloading, backwardly inclined wheel.
- Isolated suspended motor wheel-drive assembly.
- Spark resistant construction through size 24.
- Polished CRS fan shaft with rust inhibitive coating.

### DIMENSIONS [Listed In Inches]

Size	A	B Std.	B Ext.	Curb Cap ID C	D	E	Roof Opening	Curb O.D. Sq.	Unit Wt. [Lb]	Optional Wall Mounting Frame			
										Opening Sq.	O. D. F	Typical G	Typical H
06	25-5/8	23	27-3/4	15-1/2	20	6-1/2	11	15	40	12	15-3/8	6-15/16	4-11/16
08	25-3/4	24-3/8	28-1/8	15-1/2	20	7-1/8	11	15	40	12	15-3/8	6-15/16	4-11/16
10	27-5/8	25	29-3/4	17-5/8	20	8-1/2	13	17	45	14	17-1/2	8	5-3/4
12	27-3/4	26-5/8	31-3/8	17-5/8	20	10-1/8	13	17	45	14	17-1/2	8	5-3/4
15	32-3/4	29-5/8	34-3/8	20-1/2	24	13	16	20	65	17	20-3/8	9-7/16	7-3/16
18	38-3/4	30-3/4	35-1/2	25	26-1/2	7-1/2	20-1/2	24-1/2	85	22	24-7/8	11-11/16	7-7/16
21	44	35-1/4	39-1/4	28-1/8	30	4-1/2	23-1/2	27-1/2	120	25	28	13-1/4	9
24	48	38-1/2	42-1/2	31-1/8	33	7-1/2	26-1/2	30-1/2	150	28	31	14-3/4	10-1/2
30	56	43-1/2	50-1/4	40-1/8	41	8-1/2	35-1/2	39-1/2	220				
36	65	46-3/8	53-1/8	46-1/8	47	7-3/8	41-1/2	45-1/2	350				
42	73	50-1/8	56-7/8	54-1/8	55	9-1/8	49-1/2	53-1/2	530				
48	81	52-3/8	59-1/8	58-1/8	55	12-3/4	53-1/2	57-1/2	585				

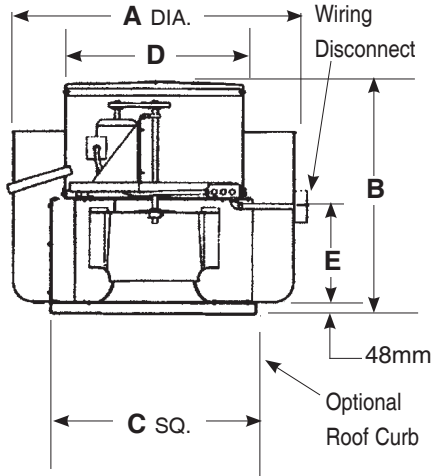
### MATERIAL AND THICKNESS [Listed In Inches]

Unit Size	Motor Cover		Shroud		Curb Cap [Alum.]	Shaft Dia. [CRS]	Std. Wheel	Diffuser [Galvanized Steel]	Support Frame [Steel Angle]	Wall Mtg Frame 1-1/2 x 1-1/2 [Steel Angle]
	Lid [Alum.]	Tube [Alum.]	Upper [Alum.]	Outer/Lower [Alum.]						
06	.063	.040	—	.080	.050	3/4	Alum.	22 ga.	—	16 ga.
08	.063	.040	—	.080	.050	3/4	Alum.	22 ga.	—	16 ga.
10	.063	.040	—	.080	.063	3/4	Alum.	22 ga.	—	16 ga.
12	.063	.040	—	.080	.063	3/4	Alum.	22 ga.	—	16 ga.
15	.063	.040	—	.080	.063	3/4	Alum.	20 ga.	—	16 ga.
18	.063	.040	.063	.080	.063	3/4	Alum.	18 ga.	—	16 ga.
21	.063	.040	.063	.080	.080	1	Alum.	18 ga.	—	16 ga.
24	.063	.040	.063	.080	.080	1	Alum.	18 ga.	—	16 ga.
30	.080	.063	.063	.080	.080	1-3/16	Steel	—	1-1/2x1-1/2x1-1/8	—
36	.080	.063	.063	.080	.080	1-7/16	Steel	—	1-1/2x1-1/2x1-1/4	—
42	.080	.063	.063	.080	.080	1-15/16	Steel	—	1-1/2x1-1/2x1-1/4	—
48	.080	.063	.063	.080	.080	1-15/16	Steel	—	1-1/2x1-1/2x1-1/4	—

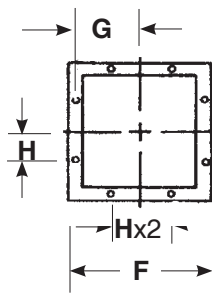
Metric (SI) in Parentheses  
Imperial [IP] Dimensions

CARNES COMPANY 448 S. Main St., P. O. Box 930040, Verona, WI 53593-0040 Phone: (608)845-6411 Fax: (608)845-6504 www.carnes.com

#### MODEL VRBK



#### OPTIONAL WALL MOUNTING FRAME



#### STANDARD FEATURES

- U. L. 762 Label for restaurant exhaust.
- Disconnect switch is NEMA 3R raintight external wiring connection.
- Insulation is provided in the ventilated motor compartment with the motor out of the airstream.
- VRBK 06-24 can be wall mounted.
- Adjustable motor sheave factory preset to requested RPM.
- Dual drive belts on 5 HP and up.
- Spun and shaped aluminum housing, mill finish standard.
- Integral drain opening.
- Integral motor overload protection on all std. single phase motors.
- Non-overloading, backwardly inclined wheel.
- Isolated suspended motor wheel-drive assembly.
- Spark resistant construction through size 24.
- Polished CRS fan shaft with rust inhibitive coating.

DIMENSIONS (In Millimeters)										Optional Wall Mounting Frame			
Size	A	B Std.	B Ext.	Curb Cap ID C	D	E	Roof Opening	Curb O.D. Sq.	Unit Wt. (Kgs)	Opening Sq.	O. D. F	Typical G	Typical H
06	651	591	705	394	508	165	279	381	18	305	391	176	119
08	654	619	714	394	508	181	279	381	18	305	391	176	119
10	702	635	756	448	508	216	330	432	20	356	445	203	146
12	705	676	797	448	508	257	330	432	20	356	445	203	146
15	832	752	873	521	610	330	406	508	30	432	518	240	183
18	984	781	902	635	673	191	521	622	39	559	632	297	183
21	1118	895	997	714	762	114	597	699	55	635	711	337	229
24	1219	978	1080	791	838	191	673	775	68	711	787	375	267
30	1422	1105	1276	1019	1041	216	902	1003	100				
36	1651	1178	1349	1172	1194	187	1054	1156	159				
42	1854	1273	1445	1375	1397	232	1257	1359	241				
48	2057	1330	1502	1476	1397	324	1359	1461	266				

#### MATERIAL AND THICKNESS (In Millimeters)

Unit Size	Motor Cover		Shroud		Curb Cap [Alum.]	Shaft Dia. [CRS]	Std. Wheel	Diffuser [Galvanized Steel]	Support Frame [Steel Angle]	Wall Mtg Frame 38 x 38mm [Steel Angle]
	Lid [Alum.]	Tube [Alum.]	Upper [Alum.]	Outer/Lower [Alum.]						
06	1.6	1.0	—	2.0	1.3	19	Alum.	22 ga.	—	16 ga.
08	1.6	1.0	—	2.0	1.3	19	Alum.	22 ga.	—	16 ga.
10	1.6	1.0	—	2.0	1.6	19	Alum.	22 ga.	—	16 ga.
12	1.6	1.0	—	2.0	1.6	19	Alum.	22 ga.	—	16 ga.
15	1.6	1.0	—	2.0	1.6	19	Alum.	22 ga.	—	16 ga.
18	1.6	1.0	1.6	2.0	1.6	19	Alum.	18 ga.	—	16 ga.
21	1.6	1.0	1.6	2.0	2.0	25	Alum.	18 ga.	—	16 ga.
24	1.6	1.0	1.6	2.0	2.0	25	Alum.	18 ga.	—	16 ga.
30	2.0	1.6	1.6	2.0	2.0	30	Steel	—	38x38x3	—
36	2.0	1.6	1.6	2.0	2.0	37	Steel	—	38x38x6	—
42	2.0	1.6	1.6	2.0	2.0	49	Steel	—	38x38x6	—
48	2.0	1.6	1.6	2.0	2.0	49	Steel	—	38x38x6	—