

CARNES®

Your Single Source For All Your HVAC Needs



SPECIALTY PRODUCTS BROCHURE - PEAB PENTHOUSE ELEVATOR VENT ASSEMBLY

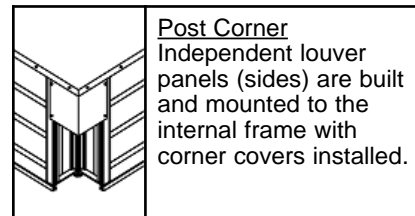
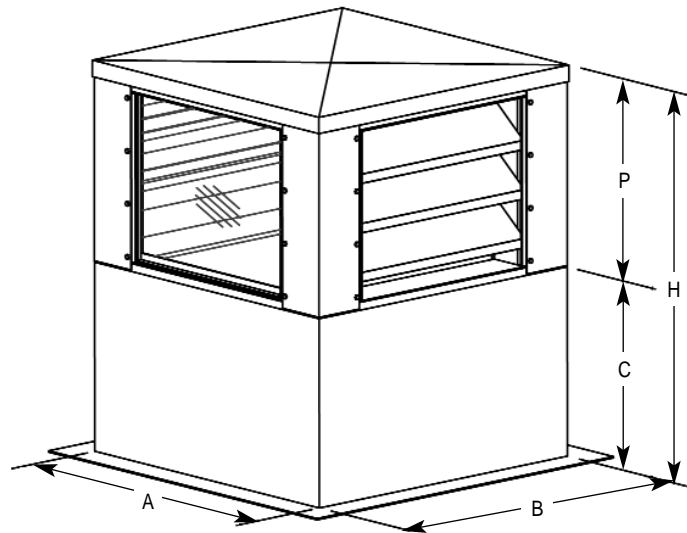
WWW.CARNES.COM

COPYRIGHT © 2012 CARNES COMPANY
ALL RIGHTS RESERVED

June 2012

Model PEAB

Louvered Penthouse 4" Elevator Vent



▼ Standard Specifications

Blades: 6063-T6 extruded aluminum with .081" (2.1 mm) thickness.

Roof: Fabricated at .090" (2.3 mm) thickness 3003-H14 formed aluminum, roof is cross broken for adequate element run-off and is attached with sheet metal screws for ease in removal.

Framing: 1-1/2" x 1-1/2" x 1/8" (38 mm x 38 mm) framing angles of 6063-T6 extruded aluminum.

Penthouse Finish: all aluminum mill finish for low maintenance and resistance to corrosion

Curb: 12 ga. galvanized steel, 3" mounting flange, welded construction mill finish (standard). Other gauges and flange widths available, consult factory.

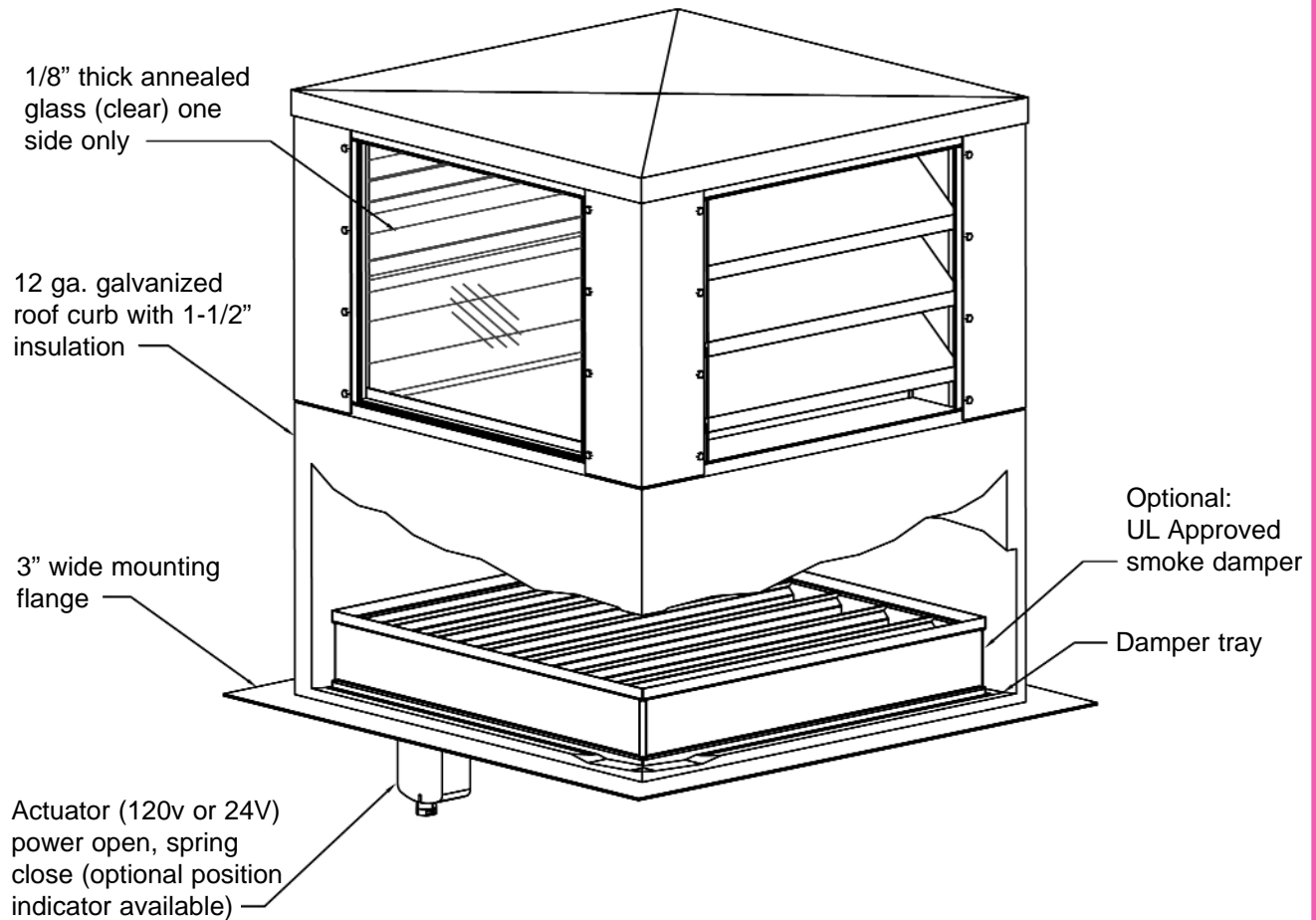
Post Corner: .090" (2.3 mm) thickness 3003-H14 formed aluminum

Glass: .125" annealed (clear)

Options

- Smoke Damper (Model ESWA or ETWA)
 - Class I
 - Class II
 - Position Indicator For Actuator (Model PXPA)
- Insect Screen (18-16 Mesh)
- Other Screens (Specify)
- Special Finish
- Anti-Condensate Coating
- 1" Fiberglass Insulation

Model PEAB Details



The Carnes Company is pleased to announce our newest product addition - the PEAB louvered penthouse elevator vent assembly. Designed with three louvered sides and one side of 1/8" annealed glass, the PEAB assembly is built specifically for ventilation and emergency smoke evacuation of elevator shafts.

The complete PEAB penthouse assembly includes the penthouse, welded roof curb and smoke damper. Optional screens, finishes and insulation are also available. Contact the Carnes sales and marketing department for more details.

CARNES COMPANY - Your Total Supplier In LOUVER AND DAMPERS PRODUCTS

Louvers



FPBB



FPAB



FLDC



FRWB



FRVB

Dampers



FDCB



FAAA



FAHA

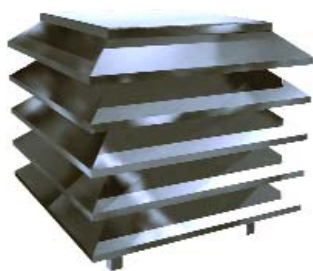


FAEA



FAKA

Penthouses



PMAB



PLAB with Pitched Roof



PEAB

Fire, Smoke & Ceiling Radiation Dampers



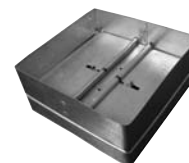
EADA



EFMA



ESZA



EDCA



EDAA

Visit Carnes website at www.carnes.com for a complete product listing.