

CARNES®

Specialty Products



Security



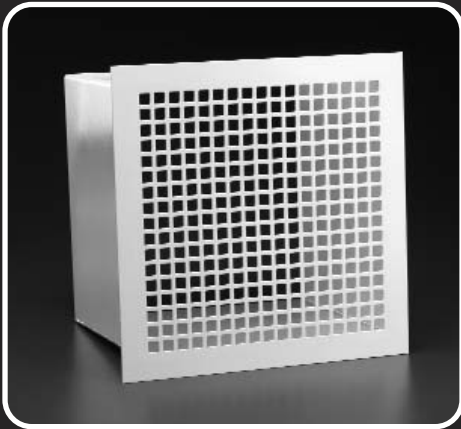
Suicide Deterrent



Heavy Duty

Security Grilles

Carnes offers several styles of security grilles and registers along with optional fire dampers. No matter if your needs are basic minimum security products or heavy duty maximum security, Carnes has what you need. With these specialized or niche products, there are limited suppliers and as a result, Engineers and Contractors may not know where to go. The answer is simple: **CARNES**. For additional models and information, visit our website at www.carnes.com. Need custom built units? No problem. Many of these products are custom built or altered to the exact job requirements. Contact Carnes for details.



RSPA01

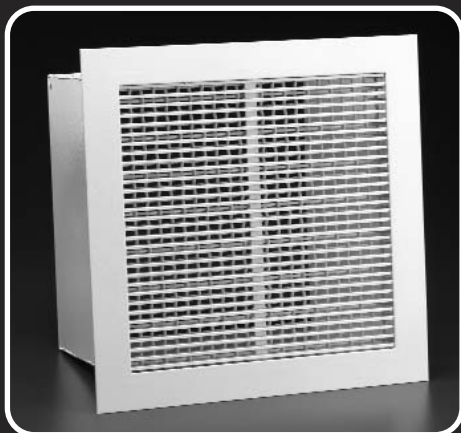
Security Level: Medium

Application

This model is used in medium security applications which require attachment from behind the wall or ceiling. It is commonly used as a return or exhaust with the RSPA35 and 36 functioning as the matching supply.

Standard Features

- 12 gauge hot rolled steel face and sleeve.
- Hole pattern is 1/2" square holes on 11/16" centers (3/16" frets).
- Wall angles are 1-1/2" x 1-1/2" x 1/8" steel, and are shipped in four loose pieces for field welding.



RSPA29

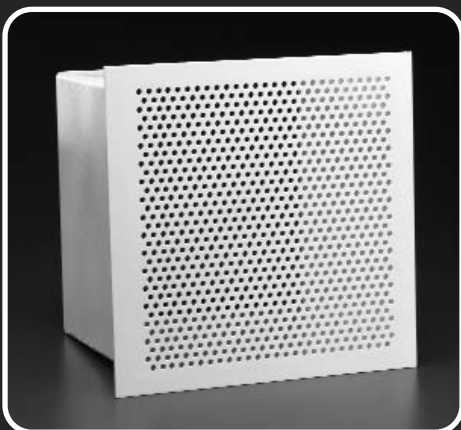
Security Level: Medium

Application

The RSPA29 is used in security applications where the goal is not only to deter passage through the wall, but also to deter concealment of contraband inside the duct. Optional damper or fire damper is available.

Standard Features

- Face and sleeve are 14 gauge hot-rolled steel.
- Core has 1/2" x 1/8" cold-rolled steel bars with rounded edges, on 3/8" centers. The bars penetrate the sleeve at each end.
- Additional 1/2" x 1/8" blade supports are welded at the back of the linear bars on 6" centers.
- The core is backed by 10 gauge #2 mesh, welded on to prevent passage of contraband.
- 1-1/2" x 1-1/2" x 1/8" wall angles are provided as standard, in four loose pieces for field welding.



RSPA25

Security Level: Maximum

Application

The RSPA25 group is used in maximum security applications where the goal is not only to deter passage through the wall, but also to deter concealment of contraband inside the duct.

Standard Features

- Face and sleeve are 3/16" hot-rolled steel.
- Hole pattern is 1/4" round holes on staggered 7/16" centers.
- 2" x 2" x 3/16" wall angles are provided as standard, in four loose pieces for field welding.
- Aluminum & stainless steel construction available upon request. Please contact factory for pricing & availability.

Suicide Deterrent Grilles & Diffusers

Carnes offers a wide range of suicide deterrent grilles and diffusers. All of our suicide deterrent units are in compliance with the NIC guidelines on suicide prevention and California Title 24. **Please note: Carnes does not make the claim that these units are suicide proof and do not replace proper security and/or safety practices.** With these specialized or niche products, there are limited suppliers and as a result, Engineers and Contractors may not know where to go. The answer is simple: **CARNES**. For additional models and information, visit us on the web at www.carnes.com.



RSPA41

Application

The RSPA41 group is used in security applications where there is concern that the occupant may attempt suicide. The double-bend louvers overlap to provide a core which makes it difficult to pass string or wire through. **This is not a substitute for proper security practices.** Because of the core design, access to a balancing damper is not possible, and so all balancing should be done via a duct-mounted damper.

Standard Features

- Face and sleeve are 12 gauge hot-rolled steel.
- Core has 12 gauge hot-rolled steel louvers, which are formed at two 90° angles, and placed on 3/8" centers.
- 1-1/2" x 1-1/2" x 1/8" wall angles are provided as standard, in four loose pieces for field welding.



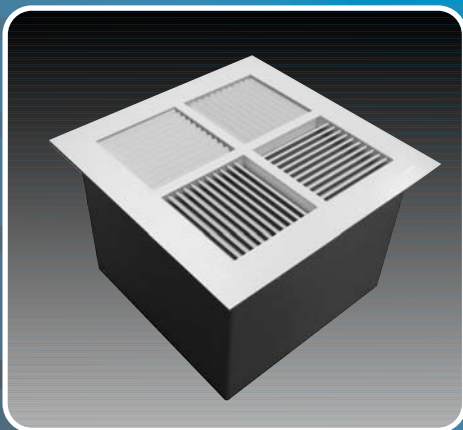
RSPA51

Application

The RSPA 51 group is used in security applications where there is a concern that the occupant may attempt suicide. The 3/16" perforated hole pattern is designed to deter passage of any string through the face and back. This hole pattern also prevents any chance to hide contraband. **This is not a substitute for proper security practices.** Because of the perforated hole pattern, the opposed blade damper needs to be accessed from the back side.

Standard Features

- Face and sleeve are 3/16" hot-rolled steel.
- Hole pattern is 3/16" round holes on staggered 9/32" centers.
- 2" x 2" x 3/16" wall angles are provided as standard, in four loose pieces for field welding.



RSPA44

Application

The RSPA44 is used in security applications where there is concern that the occupant may attempt suicide. The double-bend louvers overlap to provide a core which makes it difficult to pass string or wire through. The RSPA44 is designed for ceiling use. **This is not a substitute for proper security practices.** Because of the core design, access to a balancing damper is not possible, and so all balancing should be done via a duct-mounted damper.

Standard Features

- Face and sleeve are 12 gauge hot-rolled steel.
- Core has 12 gauge hot-rolled steel louvers, which are formed at two 90° angles, and placed on 3/8" centers.
- 1-1/2" x 1-1/2" x 1/8" wall angles are provided as standard, in four loose pieces for field welding.
- Choice of 1, 2, 3 or 4-way blow patterns.

Heavy Duty Grilles & Diffusers



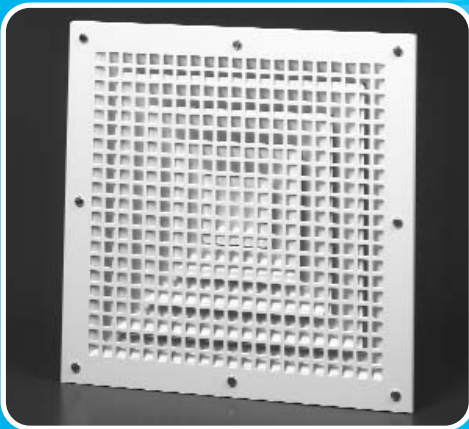
RSEA, RSHA, RTEA, RTHA

Application:

Use where durability is a major issue. Examples are gyms, locker rooms, factory floors, public areas and other places with high traffic and little supervision.

Standard Features:

- Blades are 1/8" thick steel, with rounded edges, placed on 2/3" centers.
- Blades are available set at 0° or at 40°.
- Blade supports are 14 gauge steel, placed on 6" centers.
- Frame is 18 gauge steel, with rounded edges and special reinforcements at the corners.
- Minimum single panel is 4" by 4".
- Maximum single panel is 72" wide (assuming horizontal blade placement) by 48" high.



SSPA

Application

Security Ceiling Diffusers are used in minimum security areas to provide ceiling based air distribution. They are versatile (with a wide range of neck sizes and blow patterns) and allow the use of standard air distribution design procedures.

Standard Features

- Square/rectangular steel diffuser model SKFA.
- Face plate is 12 gauge hot-rolled steel.
- Hole pattern in face plate is 1/2" square holes on 11/16" centers. Optional 13/16" square holes.
- #14 x 1-1/2" snake-eyes head security sheet metal screws are provided as standard.



RGCA

Application:

Door grilles are designed to ensure privacy while air is being circulated from one area to another. Single or dual side frames are available.

Standard Features:

- Heavy duty steel construction withstands kicking and other abuse.
- Width availability is 8" - 36" in 1/8" increments.
- Height availability is 4" - 48" in 1/8" increments.
- Sight tight and 1-1/8" thick, for greater durability.
- Louver spacing is 7/16", for approximately 80% free area.

Barrier Bars

Carnes offers a wide range of barrier bars with or without sleeves to meet your needs. Units are available with an optional damper. Options include 1/2" or 3/4" round bars on 6" centers or 3/4" round bars penetrating 3/8" x 2-1/2" flat bars or 12" centers. All units are welded at intersections.



RSPA09

Application

The RSPA09 Sleeved Barrier Bar is used when the bar is to mount in a pre-existing opening in the wall. Because it is sleeved, it can be mounted after the wall is constructed.

Standard Features

- Bars are 1/2" diameter hot-rolled steel.
- Bars are placed on 6" centers, both horizontally and vertically, with the result that the largest opening measures 5-1/2" x 5-1/2".
- Bars are welded at all contact points.
- Sleeve is 3/16" hot-rolled steel.
- Mounting angles are 1-1/2" x 1-1/2" x 3/16" steel.
- Angles are welded to sleeve at one end of the sleeve, and are provided in four loose pieces for field welding at the other end.
- Minimum wall depth for model RSPA15 is 7" to conform with UL listing.
- The fire damper is 1-1/2 hour UL listed.
- Standard finish is electrocoat acrylic baked enamel.
- Standard color is #11 bright white.

Optional Features

- When specified, Option "H" provides the wall angles in four loose pieces for field bolting, with mounting holes pre-punched in the angles, and security nuts and bolts provided.



RSPA16

Application

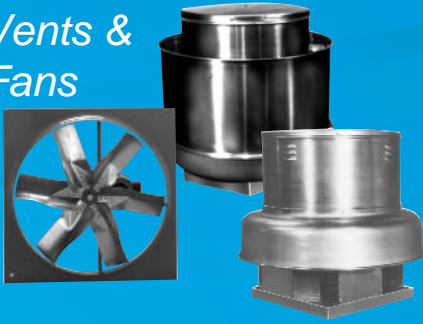
RSPA16 Barrier Bars mount inside openings to larger areas. A common application is to secure openings in roof curbs.

Standard Features

- Bars are 1/2" diameter hot-rolled steel.
- Bars are placed on 6" centers, both horizontally and vertically, with the result that the largest opening measures 5-1/2" x 5-1/2".
- Bars are welded at all contact points.
- Frame is 2-1/2" x 2-1/2" x 3/16" hot-rolled steel angle.
- Standard finish is electrocoat acrylic baked enamel.
- Standard color is #11 bright white.

Quality Built Products Since 1939

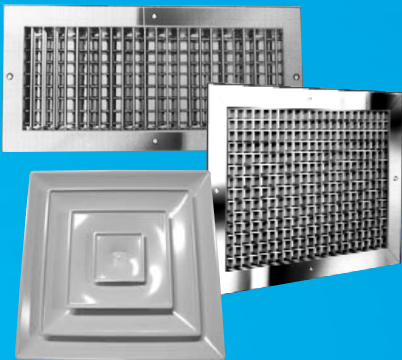
Vents & Fans



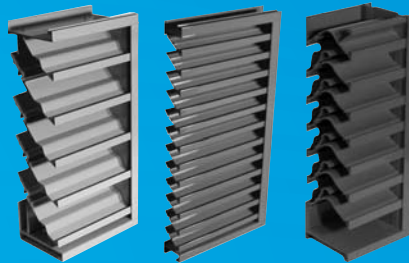
VAV Terminals



Registers, Grilles & Diffusers



Louvers & Penthouses



Energy Recovery



Fire & Smoke Dampers



Humidifiers



MEMBER



448 South Main Street
P.O. Box 930040
Verona, WI 53593-0040
Ph: 608-845-6411
Fax: 608-845-6504
Email: carnes@carnes.com

WWW.CARNES.COM