

WPDB11H ENERGY RECOVERY VENTILATOR
Technical Data

AHRI Certified
Enthalpy Recovery

The Carnes WPDB11H is a energy recovery ventilator of 1,100 CFM. This energy recovery ventilator is the ideal powerful unit for spacious homes, businesses, daycare centers, clinics, bars, restaurants, etc.


The Carnes WPDB11H is the ultimate solution to prevent excess humidity and improve air quality. Optional version with air recirculation system is available.

- High performance air flow
- Silent
- Highly cost effective and cost efficient

LISTINGS AND CERTIFICATIONS

AHRI 1060 Certified

- C22.2 no113
- UL 507

Certified 

CASING

Material: prepainted 22 ga steel
 Insulation: 1" foil faced fiberglass
 Drain Connection: 3/8" or 1/2" dia.
 Duct Size: 8" x 20"
 Height: 23-7/8"
 Width: 36-1/4"
 Depth: 47-1/4"
 Weight: 214 lbs.
 Shipping Weight: 269 lbs.

FANS

Qty: 4
 Type: backward curved centrifugal fans

MOUNT

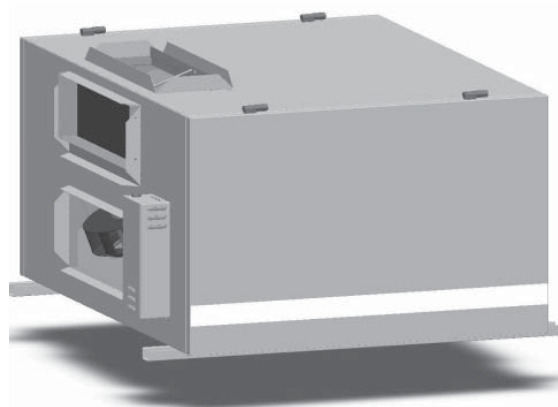
Suspended by chains with anti-vibration springs or on a shelf.

ELECTRICAL SPECIFICATIONS

Voltage: 120 VAC
 Frequency: 60 Hz
 Amperage: 10.5 A
 Power: 1260 watt
 Electrical Wiring:
 • Extension cord

CONTROL

Low voltage dry contact (24 VAC 20VA) for:
 • Occupancy control (start/stop)
 • Fan interlock (NO and NC)
 • Speed selection
 • Exchange /recirculation



24VAC 10VA output for:

- Supply air damper
- Exhaust air damper

Compatible with:

- Liquid crystal display electronic humidistat
- Mode control (exchange or recirculation)
- Humidity control
- Speed control (intermittent, high or low speed)
- Timer

DEFROST

Cycles controlled by outside air temperature sensor

- Recirculation
- Exhaust only

DEFROST CYCLE TEMPERATURE			
Outside Temperature		Standard min.	Extended min.
Celsius	Fahrenheit	Defrost/Outside Air	Defrost/Outside Air
t > -5	t > 23	n.a.	n.a.
-5 > t > -25	23 > t > -13	7/25	10/20
-25 > t	-13 > t	10/22	10/15


FILTERS

Qty: 6
 Type: Washable, aluminum
 Optional Filters (add to external static pressure, in-wg)

Airflow (CFM)	MERV8	Charcoal	MERV13
500	0.05"	0.05"	0.23"
800	0.09"	0.09"	0.38"
1100	0.17"	0.17"	0.49"

Dimensions: 13-3/4" x 15" x 7/8"

RECOVERY CORE

Material: polymeric membrane (enthalpy recovery)
 Performance Certified: 
 Qty: 3
 Dimensions: 12"x12"x15"
 Step: 2.5 mm

WARRANTY

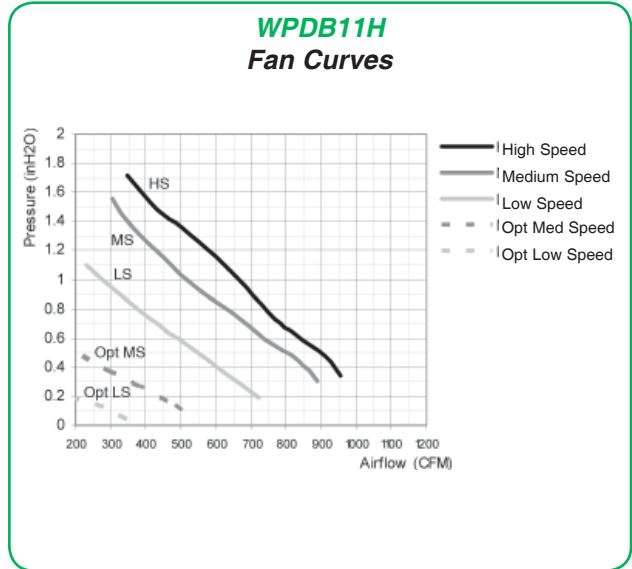
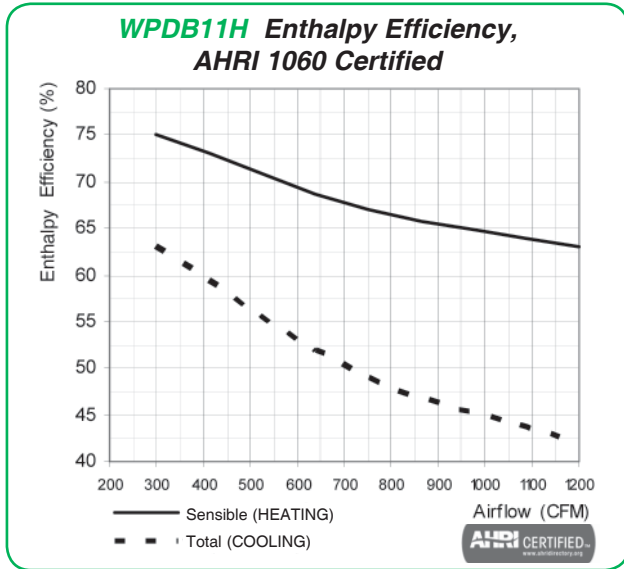
Appliance — limited 2-years.
 Core Assembly — limited 3-years.

Recovery Plate

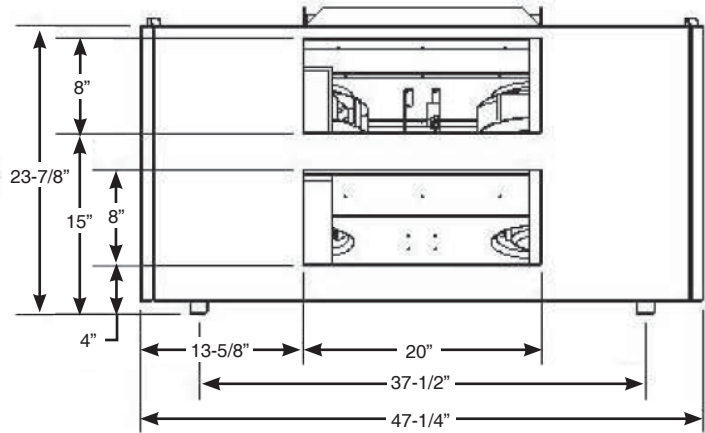
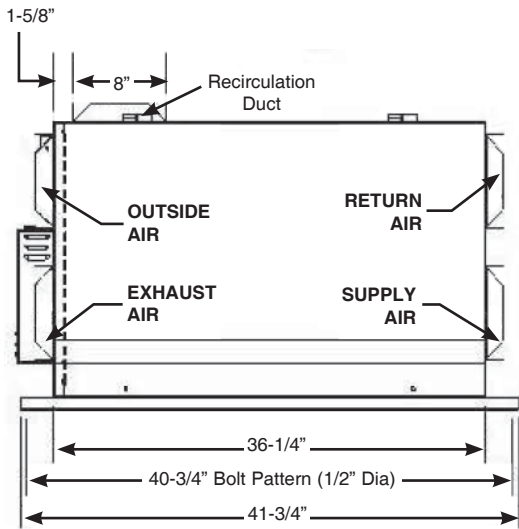
WPDB11H ENERGY RECOVERY VENTILATOR

Technical Data

▼ Recovery Performances

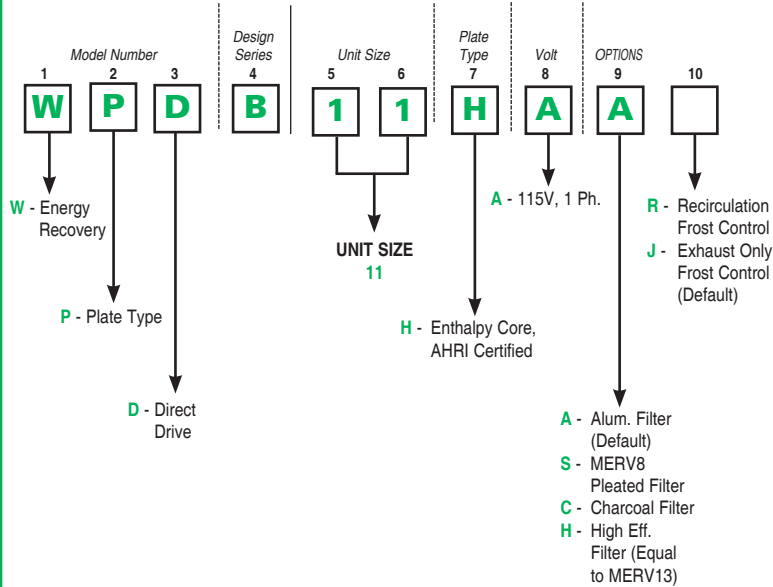


▼ Dimensions

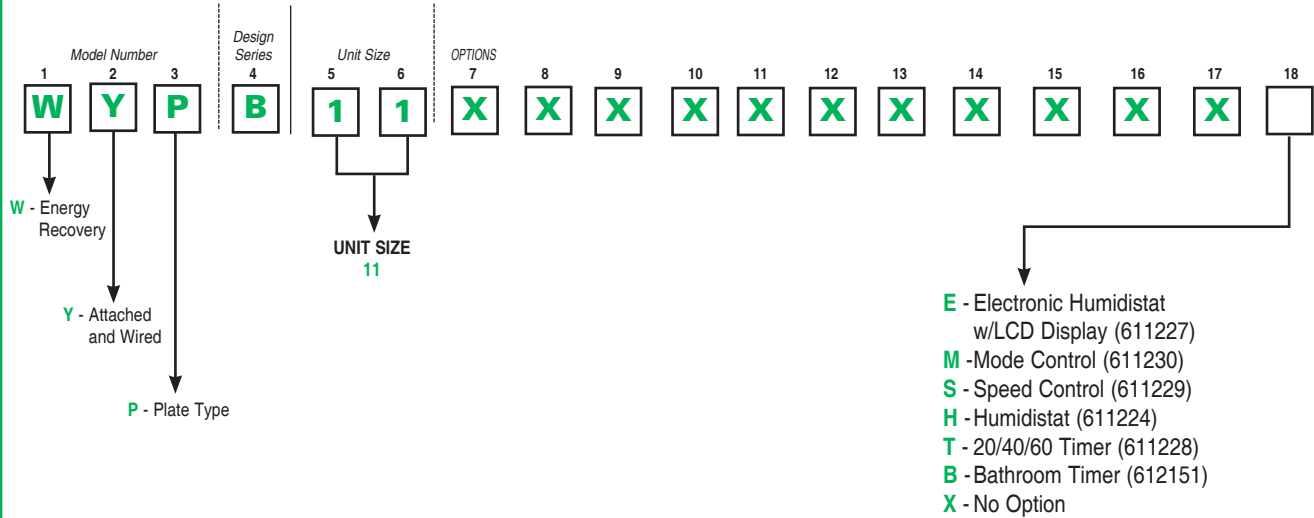


Recovery Plate

Plate Type - Direct Drive



Optional Controls



Recovery Plate